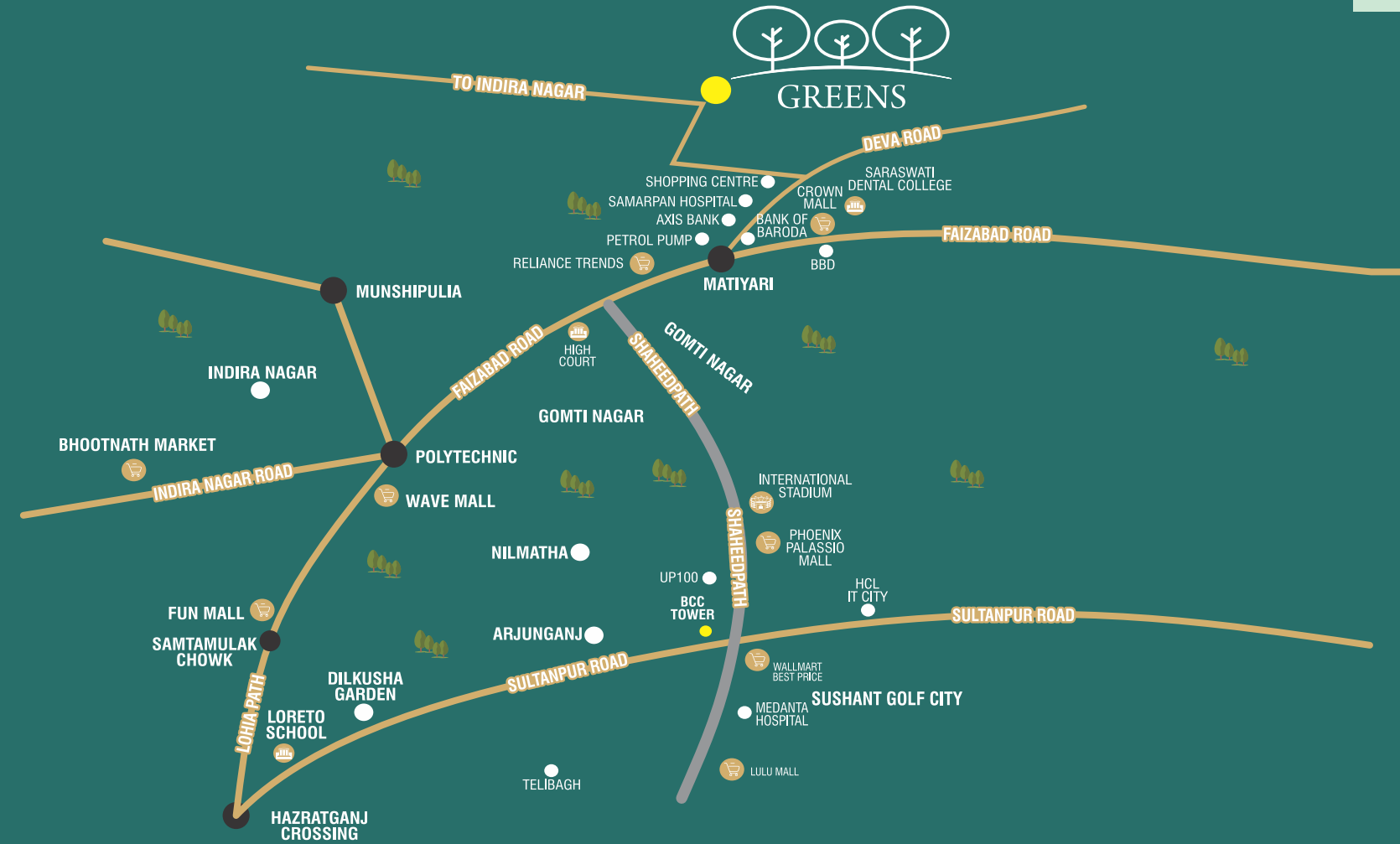


Location Map



Location Advantage

8 MINS  
from  
New High Court

8 MINS  
from  
BBD College

10 MINS  
from Ram Swaroop  
University

25 MINS  
from  
Hazratganj

12 MINS  
from  
Gomi Nagar

10 MINS  
from  
Wave Mall

Constructed By-

**SHRI BALAJI CONSTRUCTION COMPANY**

Corporate Office:

3rd Floor, Ganj Trade Centre, 10 Capper Road, Hazratganj, Lucknow (U.P.)

[www.bccbuildtech.com](http://www.bccbuildtech.com) [info@bccbuildtech.com](mailto:info@bccbuildtech.com)

MARKETED BY:

**Attractive Nirman Pvt. Ltd.**

**Toll Free: 8287300030**

Scan Code



Follow us on

[/shribalajiconstructionco](https://www.facebook.com/shribalajiconstructionco)

[/shribalajiconstructionco](https://www.instagram.com/shribalajiconstructionco)

[/shribalajiconstructionco](https://www.youtube.com/shribalajiconstructionco)

**Disclaimer:** This contains artistic impressions and no warranty is expressly or impliedly given that the completed development will comply in any degree with such artist's impression as depicted. The landscape, water bodies, details of lobbies, balconies features & facilities of the common club/community centre/any other area, furniture, accessories, paintings, items, electronic goods, fittings/fixtures, decorative, false ceiling including finishing materials, specifications, shades, sizes etc. shown in the pictures, are only indicative in nature and for illustrative purpose only and does not form a part of the standard specification. Recipients are advised to apprise themselves of the necessary and relevant information of the project/offer prior to making any purchase decisions. The sale is subject to terms of application form and agreement for sale. All specification of the unit shall be as per the final agreement between the parties. Builder reserves the right to change without any prior notice for betterment and fast deliveries of the project.



**SHRI BALAJI  
CONSTRUCTION  
COMPANY**



Naubasta Kala, Deva Road, Lucknow

**1, 2 & 3 BHK APARTMENTS & LUXURY VILLA**

*Superb Living Experience*

## BRAND AMBASSADOR



Aman Verma  
Bollywood Actor

HELLO FRIENDS,

This is your dear Aman Verma, friends I have been associated with Shri Balaji Construction Company for almost 5 years as their brand ambassador, honestly I feel very happy to be part of this group. Shri Balaji Construction company are elite real estate builder providing wide range of apartments, villas, penthouses and commercial projects with highest quality standards at highly affordable and competitive rates in Lucknow. They are setting benchmark for this industry. Bcc is giving special privileges and peace of mind to all their customers. BCC is the first choice for first time buyers. Thank you BCC for the quality and standards you have set.



## BRAND AMBASSADOR



Bhagyashree  
Bollywood Actress

HELLO EVERYONE,

I Bhagyashree have signed with renowned real estate company of Lucknow. Shri Balaji Construction Company as their brand ambassador. I am thankful and feel privileged to be associated with this company. The Projects of BCC are situated at prime location across Lucknow, they have excellent useful apartments, villas and penthouses with very high standard quality materials used in all projects. I have personally visited BCC Projects through different ways. BCC has always delivered their projects to the customers which they have launched. During my life I have visited many countries across the globe and seen many other buildings by that experience i can say by my heart BCC is at par with world class infrastructure.



## SHRI BALAJI CONSTRUCTION COMPANY

### FLAT | COMMERCIAL

Shri Balaji Construction Company, a company in the construction business since last ten years.

Engineering numbers of projects in a very short tenure in Lucknow.

BCC serves both public and private sector clients and comprises of many well-coordinated, highly professional teams located across Lucknow. We are best known for infrastructure projects including residential flats, plots, villas and commercial offices spaces.

BCC is equally effective at building both large and small scale projects through its two operating division.

BCC holds a wide range of properties at prime locations in Lucknow.

BCC not only holds the prime responsibility of customer trust and satisfaction but also has the ability to serve them at its best within the given time period.



**SHRI BALAJI  
CONSTRUCTION  
COMPANY**

### VISION

To achieve the highest standard of urban development while maintaining strong working relationships and achieving the best results for our clients.

### MISSION

The company's mission as a real estate company is to develop and deliver unique, integrated lifestyle and work place environments through its focus on high quality architecture, strong project execution and our customer-centric approach.





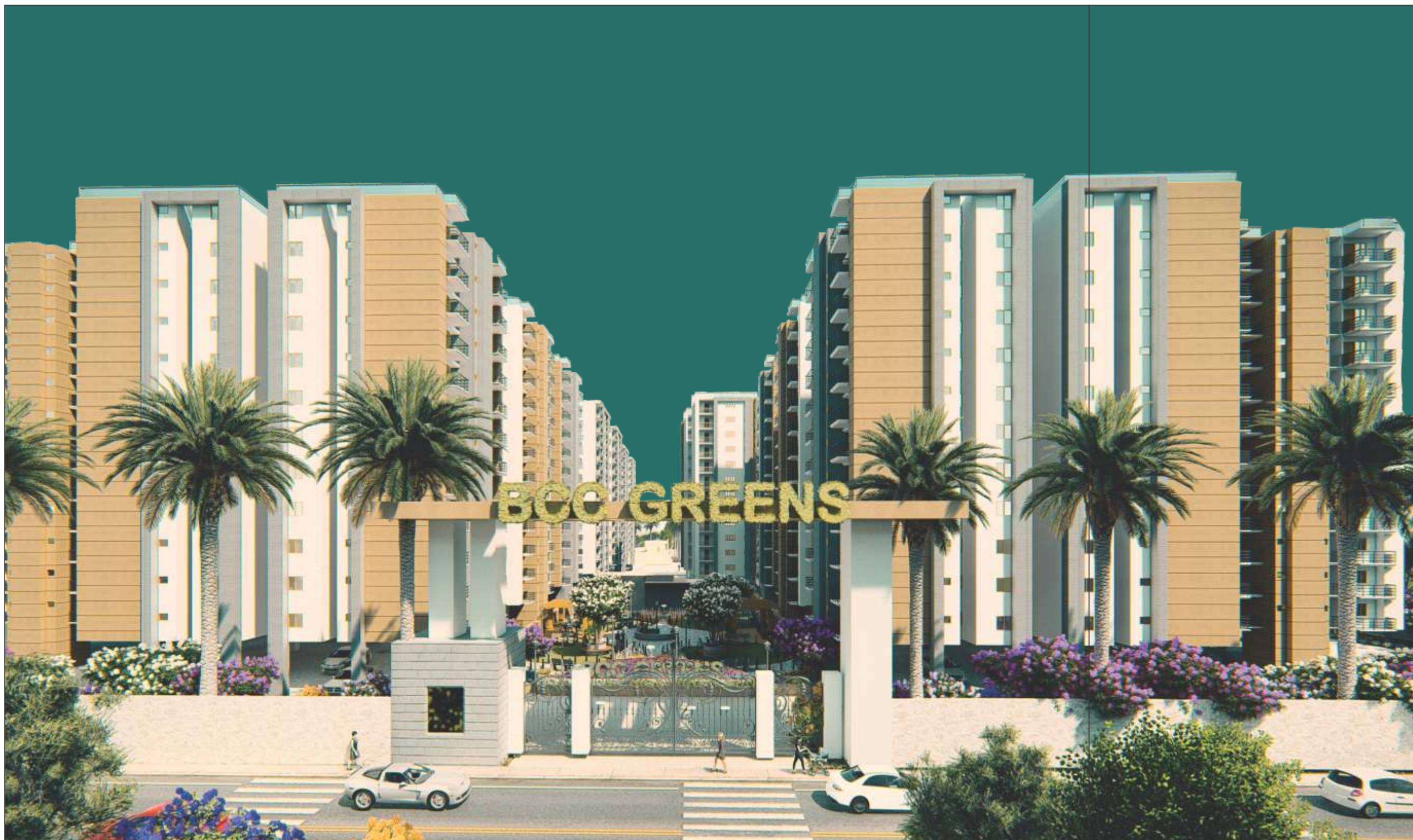
**SHRI BALAJI  
CONSTRUCTION  
COMPANY**



### **1, 2 & 3 BHK APARTMENTS & LUXURY VILLA**

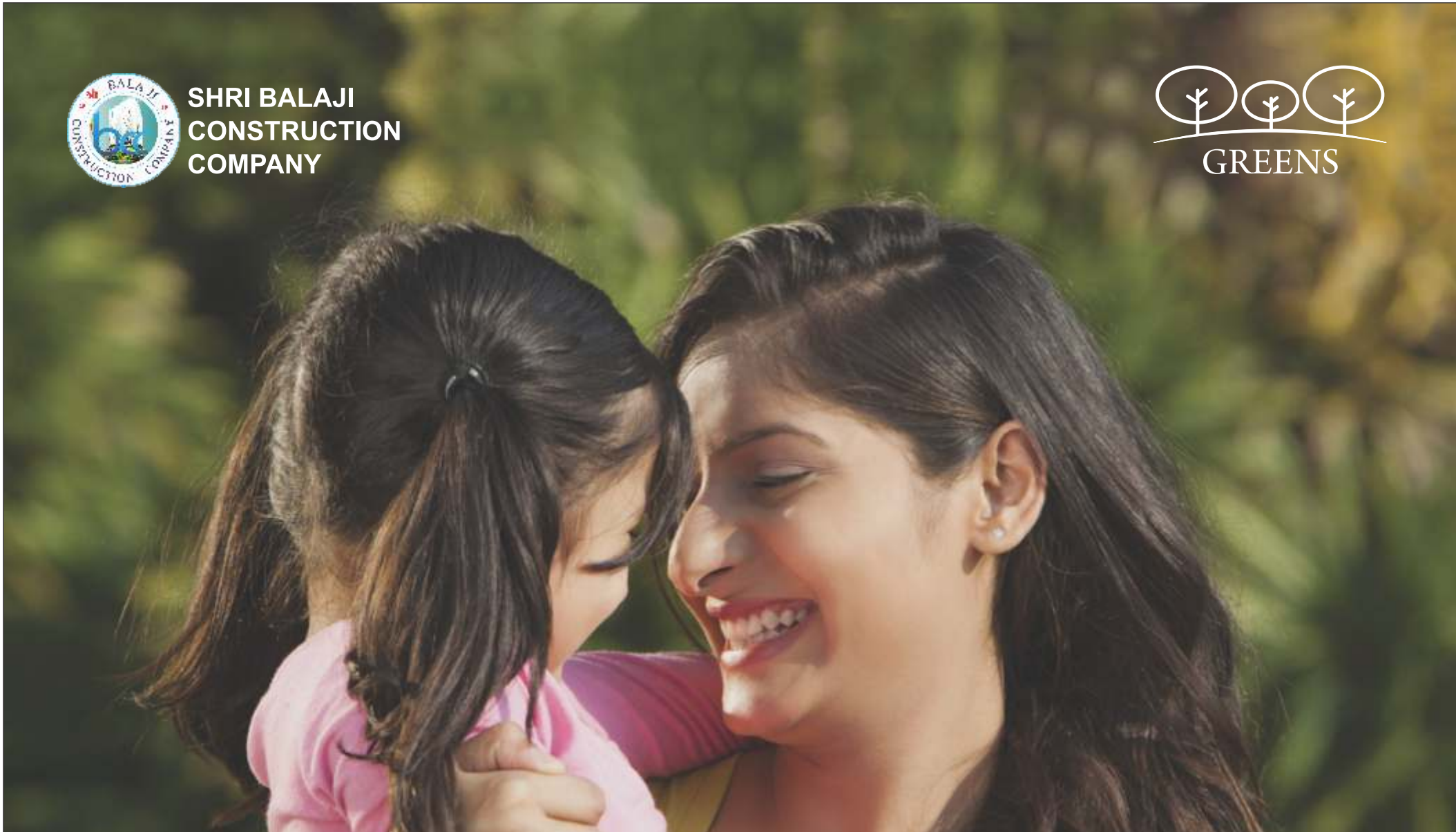
A gracefully planned elegant residential community, where you can rediscover the joy of community living. It offers you one, two and three bedroom homes, set in five delightfully deigned towers. Presenting a living environment that is safe and private while yet fostering social interaction and camaraderie. Located in the well-developed area of Lucknow; every civic amenity and need within ready reach.

A large, exclusive clubhouse, equipped with a wide and diverse range of the recreational and leisure amenities to ensure that you never have a dull moment in the community. Discover how a life of grace and elegance can be yours to enjoy in a home that's been crafted with your lifestyle in mind.





SHRI BALAJI  
CONSTRUCTION  
COMPANY



## LUSH GREEN AREA

It's fabulous sunny weather and you wish to relax and take a bath in beautiful yellow light under the clean blue sky, with green color and beautiful flowers around you. Not to worry, just grab a snack from the shop and a cool bottle of drink and head to the park, whether you sit out in the sun at the park, lounge by the elaborate fountain or enjoy the charismatic view for fun around, there are plenty of lovely green spaces in Greens.



## LIVE WITH HEALTHY ENVIRONMENT

Fitness Club or Gymnasium at Greens is equipped with all the modern equipments and resources. Gyms are popular as a social setting to meet people with a common interest in physical self-improvement. These facilities are more used for physical education, intramural sports, and Common entrance. Therefore, Green offers you a collection of expensive facilities and amenities that are important to build up your health and social livelihood.



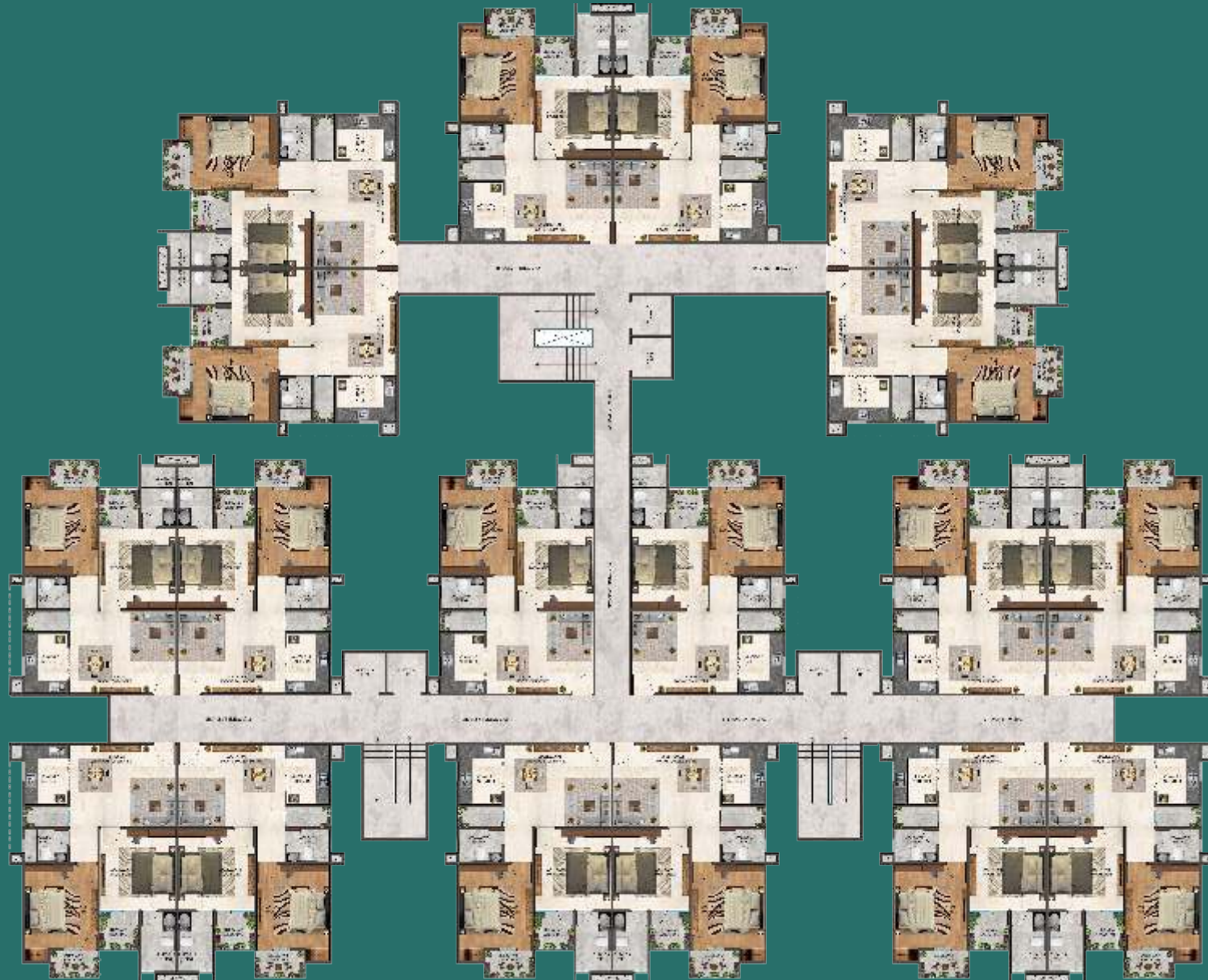
FLOOR PLAN  
1 BHK TOWER



1 BHK  
Area: 650.00 sq.ft  
(60.38 Sq. Mtr.)



FLOOR PLAN  
2 BHK TOWER



2 BHK  
Area: 1020.00 sq.ft  
(94.76 Sq.Mtr.)

FLOOR PLAN  
3 BHK TOWER



3 BHK (Type -1)  
Area: 1350.00 sq.ft  
(125.41 Sq.Mtr.)





3 BHK (Type -2)  
 Area: 1350.00 sq.ft  
 (125.41 Sq.Mtr.)





## RICH AMENITIES

- Designed As Per Vastu - Shastra
- Earthquake Resistance
- Rain Water Harvesting
- Beautiful Pathway For Daily Walk
- Yoga / Meditation Room
- Well Equipped Gymnasium
- Safe And Clean Kids Play Area
- Community Hall For Parties And Celebrations
- High Speed Lift
- Cross Ventilated Flats
- Skates Area
- Community Hall
- Separate Transformer For Society
- 24hrs Drinking Water Supply
- 24hrs Electric Power Backup For Common Area
- 24hrs High-Tech Security With CCTV And Guards
- Impressive Entrance Lobby
- Modern And Effective Fire Fighting System
- Billiards Room For Indoor Gaming
- Table Tennis
- Lush Green Central Area
- Swimming Pool
- Badminton Court
- Basketball Court



## STANDARD SPECIFICATION

### STRUCTURE

The structure of the building is embedded with the strongest mixture of concrete supported by Best Quality Iron Bars of good. Each pillar or Beam is strong and tough enough to hold tons of weights which keeps you and your loved ones safe.

### ELECTRICAL

Best quality and thick copper wires are used that do not catch fire easily and intake approximate amount of current in it with brands like Anchor, Polycab, Havells.

### LIFTS

Johnson/Mitsubishi/Onyx/Schneider etc elevators, well known brands is used for Lifts in the Building with safety alarm system facility, Emergency Landing to keep you safe in bad times.

### SANITARY

Ultramodern and Designer fittings brands are use in bathrooms with given guarantee/warranty for 5 to 10 years with is polish on top of the brands.

### VASTU

Vastu plays an important role in life. Vastu shastra may not be essential for living, but it is highly recommended for a better and healthier life. It is a proven and well-observed science which manipulates the forces of natures to work in.



### LIVING/DINING ROOM :

- Flooring:- Superior quality Vitrified tiles of well known brands like Sunheart / Orient / Nitco / Kajaria or any other equivalent brand.
- Walls :- Plastic Emulsion paints.
- Ceiling:- POP Punning with Plain ceiling and Molding with Cornish Design.
- Door / Windows Designer:- Wooden Button Flush Doors for smart look and solid structure or UPVC for better look and light.
- External Doors :- Hardwood Frame Designer Door with Branded Locks / UPVC doors with glass for better light in your dream house.

### KITCHEN

- Kitchen Top:- 2 ft. wide Kitchen Top with Black Granite / Green Marble
- Flooring:- Made in India Verified Branded tile (Sunhurt / Orient / Nitco / Kajaria / equivalent brand).
- Walls :- Designer 12x18 Tiles upto 2 ft. of height from wall above kitchen top.
- Ceiling:- Plastic emulsion water proof paints which helps you in keeping your kitchen clean and tidy.

### TOILETS

- Flooring:- Anti Skid Ceramic Flooring with proper slope for easy water flow which keeps your surface dry and avoids wall damp.
- Ceiling:- POP Clean Flat Punning / False-ceiling with 2x2 Water Proof S heets for future Maintenance.
- Doors/Windows:- Waterproof Designer Doors with both side design.
- Fitting & Fixtured/Equipments:- All Branded fittings with upto 10 years of warranty by Jaguar / Somany / Cera / Parryware etc. All CPVC, PVC non-rustic internal fitting pipes of best quality which allows an easy and long-lasting flow of high temperature warm water. Under Brands Like Supreme / Raksha / Finolex etc.

#### Note:

The View shown are artist's impression only. These elements may change without any prior notice. The furniture and fixture are not a part of standard specifications. The dimensions and areas shown are from block to block, without considering any plaster & finishing and any request for other assets will be chargeable. BCC reserves all the rights to change specifications without any prior notice, in the interest of quality and timely delivered. We request our valuable customers to note that such changes shall not affect the quality of building material.



Superb Living Experience



Actual pictures



## SOME OF OUR RUNNING PROJECTS



**SAPPHIRE**  
2 & 3 BHK APARTMENTS  
Arjun Ganj, Sultanpur Road



**ENCLAVE**  
2 & 3 BHK APARTMENTS  
Kanpur Road, Lucknow



**ESTATE**  
3 BHK APARTMENTS  
Gomti Nagar, Lucknow



**DAFFODILS**  
2, 3 & 4 BHK APARTMENTS  
Sector 14, Vrindavan Yojna, Lucknow



**CINE GRAND**  
COMMERCIAL & RESIDENTIAL 3 BHK APARTMENT  
Hazratganj, Lucknow



**HEIGHT**  
2 & 3 BHK APARTMENTS & LUXURY VILLA  
Raebareli Road, Near PGI, Lucknow



**BLUE MOUNTAIN**  
2 & 3 BHK APARTMENTS  
Sector 17, Vrindavan Yojna, Lucknow



**VISION**  
3 BHK + SERVANT APARTMENTS  
Moti Nagar, Aishbagh, Lucknow



**GRAND**  
2, 3 & 4 BHK APARTMENTS  
Main Faizabaad Road, Lucknow